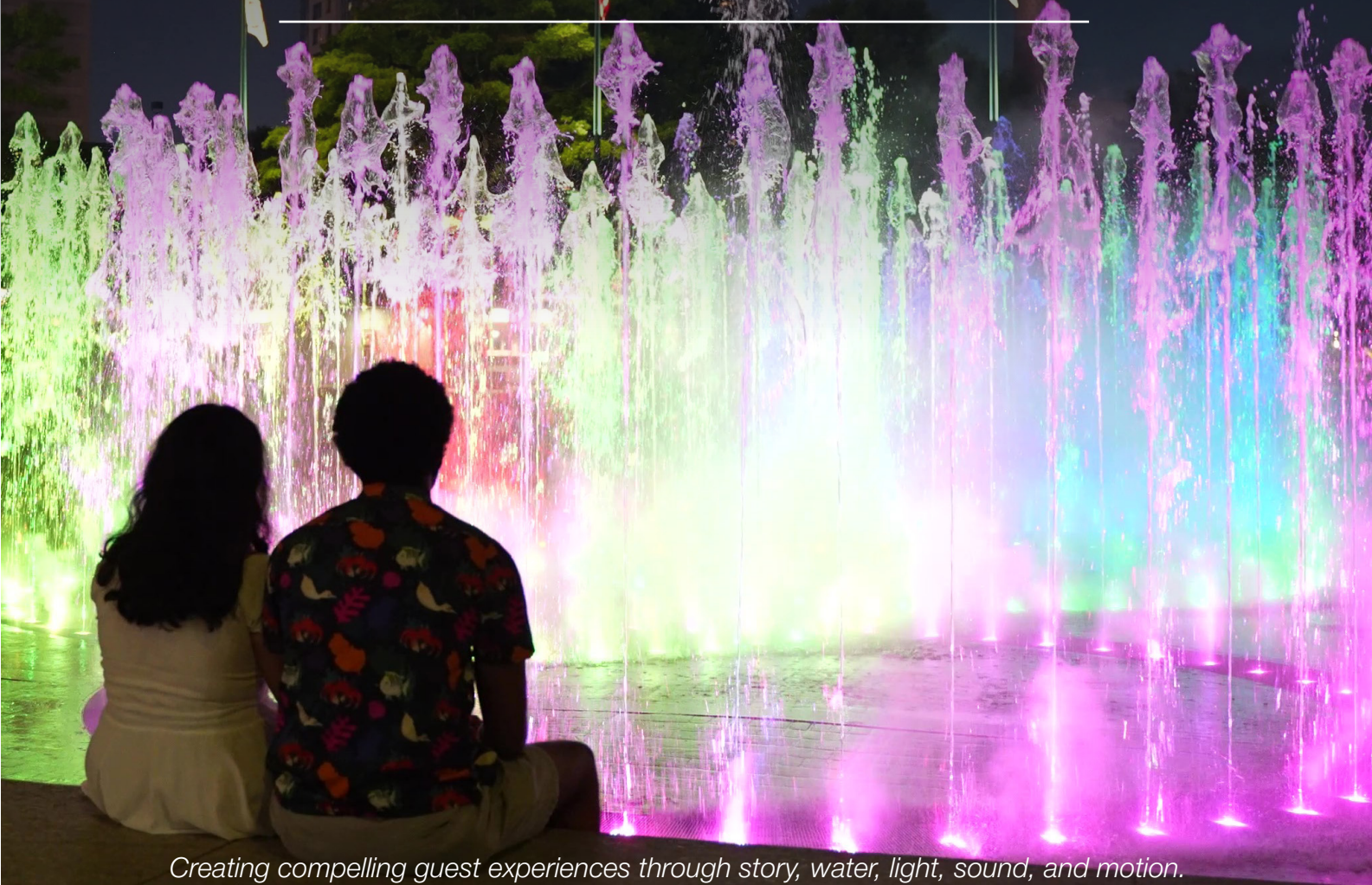


Water IN MOTION



fountain people
A PLAYCORE Company

NOTABLE FOUNTAIN PEOPLE PROJECTS & INSTALLATIONS



Creating compelling guest experiences through story, water, light, sound, and motion.



**DESIGNED TO
CAPTIVATE &
CREATE
CONNECTION.**

The Fountain People

Story



Fountain People was founded with the goal of providing Architectural Specifiers with a complete package of products and services. Our mission is to actively promote the use of water features as significant design elements in all architectural, recreation, and entertainment environments. We strive to provide our customers with the industry's highest quality of products and design support to ensure the successful completion of their water feature installations. Our design team collaborates with architects, landscape architects, aquatic consultants, engineers, artists, and end users around the world to develop innovative aquatic play environments and equipment.



Backed by long-term team stability and 213 years of combined expertise from seven core leaders, our experience is as deep as it is dependable.

Fountain People, Inc.
4600 Highway 123 | San Marcos, TX 78666
512.392.1155
sales@fountainpeople.com
www.fountainpeople.com



Proudly Manufactured in
San Marcos, Texas.



Fountain of Rings Restoration

Centennial Olympic Park | Atlanta, GA



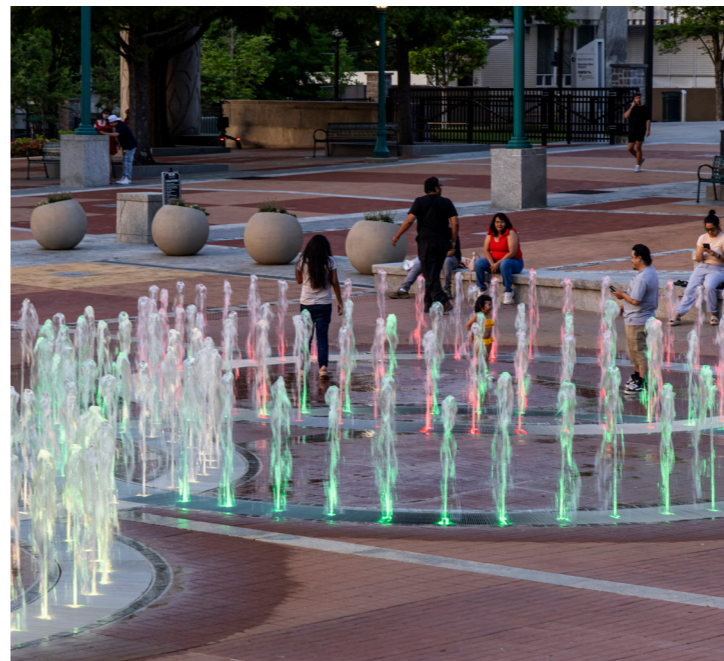
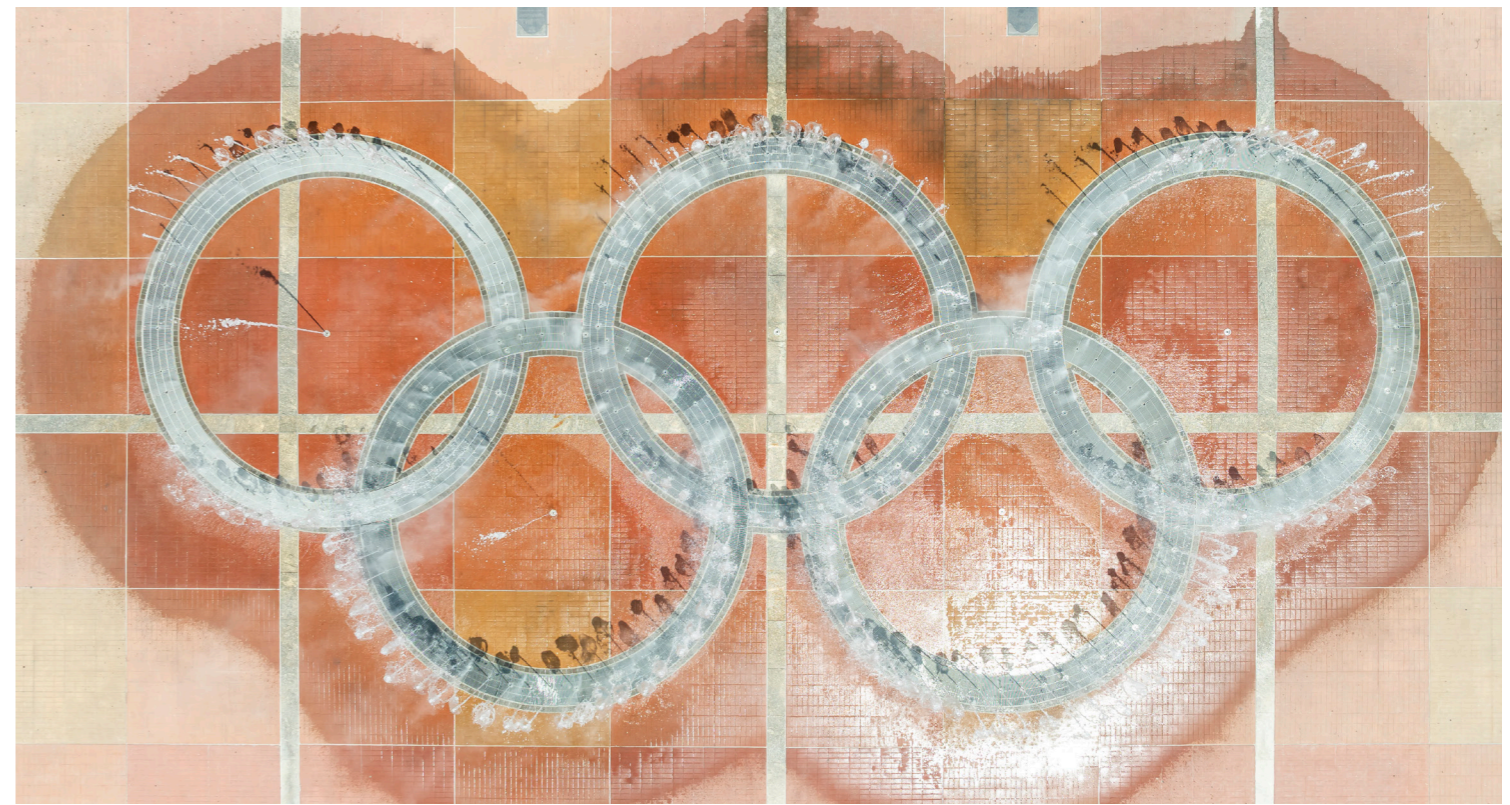
Originally unveiled in 1996 as the centerpiece of Centennial Olympic Park during the Summer Olympics, the Fountain of Rings has since become a beloved symbol of Atlanta and a testament to the city's Olympic legacy. Spanning 22 acres in the heart of downtown, the park has played a pivotal role in the area's transformation, drawing billions in development, boosting the local economy, and enhancing the quality of life for residents and visitors alike.

The Fountain of Rings is an interactive, show-style water feature that draws crowds with its dazzling performances of water, light, and music. With over 250 Precision Jet nozzles and an advanced LED lighting system set flush in the plaza, it serves as both a splash pad by day and a choreographed show fountain by night. Its captivating displays make it one of the most photographed landmarks in Georgia.

In 2025, Fountain People, Palmer Construction Partners, Hogan Construction, and Pfists, Inc., led a major renovation of the fountain, the first in nearly two decades, revitalizing its infrastructure while enhancing performance. Upgrades included 256 new display nozzles with variable-flow valves, integrated LED ring lights, a touchscreen control panel for choreographed shows, and modernized filtration and fog systems. These enhancements ensure continued reliability and creativity, preserving the fountain as a world-class destination and centerpiece of downtown Atlanta for generations to come.



SEE THIS WATER
FEATURE IN MOTION





Terre Haute Water Feature

City Hall | Terre Haute, IN



As part of a Turn of the River rejuvenation project, the City of Terre Haute and Wabash Valley Art Spaces sought sculptor and project manager, Brad J Goldberg, to create a water feature that would connect downtown with the Wabash River front area through public art. Sitting between the Vigo County Courthouse and Terre Haute City Hall, the piece “creates a conversation between these two buildings.” said Goldberg and acts as a gathering space for people to enjoy picturesque views of the surrounding landscape that overlooks the riverfront. Fountain People provided design services, full engineering, and a complete mechanical package that included the fountain vault, pumps, filtration, controls, sensors, and fittings.



Photo: © Brad J. Goldberg

Photo: © Brad J. Goldberg

Photo: © Brad J. Goldberg

Photo: © Brad J. Goldberg



Gatton Park Interactive Fountain

Gatton Park on the Town Branch | Lexington, KY



What was once an underutilized parking lot has been reimagined as an 11-acre green space, creating a vibrant community destination for residents in Lexington, Kentucky. Shaped by extensive community feedback, the park was designed by Sasaki to be inclusive, playful, and ecologically rich, inviting residents and visitors to connect with nature and one another. A key feature is its interactive fountain, which blends seamlessly into the park's naturalistic setting.

Discretely mounted within the park's artificial rockwork, foot-activated bollards blend seamlessly into the natural setting while enhancing the design. With a simple step or press, visitors can trigger streams of water that flow through rocky channels or burst from the dancing fountain jets. These hidden controls make the experience feel organic, intuitive, and engaging. In the lower plaza, six Fountain-in-a-Can jets provide programmable dancing spray effects up to five feet tall, illuminated at night by integrated RGBW LED lights.

Housed in a below-grade vault, the filtration system includes a display and filter pump, sand filtration, strainers, chemical treatment, and a UL-rated control panel. Automated water level sensors and a touchscreen interface offer staff reliable, real-time management. Together, these elements ensure a high-performing aquatic play environment that elevates the park's mission of sustainability, inclusion, and community connection.

Photo: ©Gatton Park on the Town Branch



SEE THIS WATER
FEATURE IN MOTION

Splash pad by day.



Photo: © Gatton Park on the Town Branch

Illuminated water feature by night.



Photo: © Gatton Park on the Town Branch



Photo: © Gatton Park on the Town Branch



Photo: © Gatton Park on the Town Branch



Photo: © Gatton Park on the Town Branch

Product Focus: Fountain in a Can™



All-in-One, Flush-Mount Fountain System with Programmable Light & Flow

FIAC-2000 Series Fountain-in-a-Can is a “pour in place” assembly containing a programmable (on-off) Hydro-Valve™ spray effect and 360-degree illuminating LED light fixture. The assembly can be utilized for plaza style water features or may be used for interactive splash pads. Manual adjustment valve allows for the effect’s water height to be adjusted from the top-plate without ever having to enter the can. This unit is also available in a UL Listed H2O load-rated stainless steel cover for vehicular traffic.



LEARN MORE



Dodge Fountain Restoration

Hart Plaza | Detroit, MI



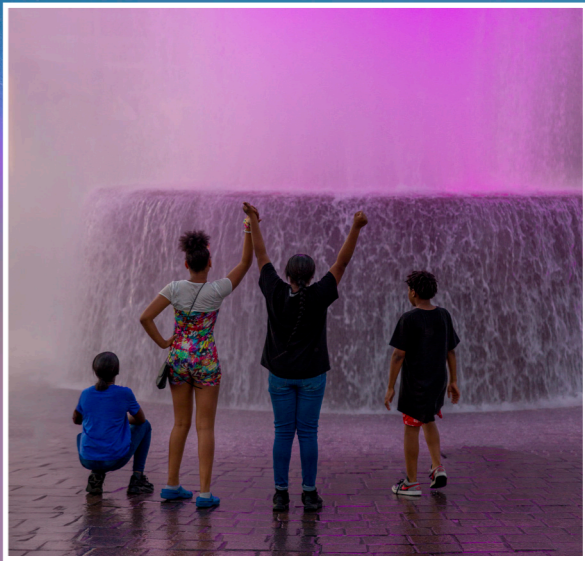
Located along the Detroit River, the Dodge Fountain has been a defining public landmark since 1978. Designed by renowned architect Isamu Noguchi, the futuristic stainless-steel structure became an early icon of modern fountain design. After decades of use, the fountain had fallen into disrepair and remained inactive for over ten years, prompting calls for a major revitalization.

The fountain's design is both distinctive and innovative, featuring a massive stainless-steel structure with two legs that support and supply water to a suspended stainless-steel ring. Below this suspended ring lies a lower basin, encircled by an eight-foot tall wall, creating an interactive space where visitors can get up close to the water feature. The fountain's display includes intricate spray effects and LED underwater lighting, both in the lower basin and the upper ring, enhancing its visual appeal.

The renovation, executed by Fountains by Waterworks, involved significant upgrades to the fountain's submersible lighting and operational systems. Fountain People supplied the specialized fountain equipment for the project, including over 160 LED submersible light fixtures that now illuminate the lower basin, support legs, the upper panel, and fog jets in multi-colored, choreographed displays. Additional upgrades included VFD-controlled electrical panels, a touchscreen control interface, a water level sensor, a fill manifold, and misting nozzles. These enhancements allow for more dynamic programming and precise operation, turning Dodge Fountain into a revitalized centerpiece in downtown Detroit.



SEE THIS WATER
FEATURE IN MOTION





Located at High Point University in North Carolina, the Qubein Arena Panther Fountain serves as a striking entry feature to the university's arena and conference center. The tiered circular fountain is crowned by a 20-foot bronze panther sculpture created by Brian Keith Fine Art. This bold addition was designed to reflect the university's values and inspire visitors, students, and fans alike.

The 38-foot diameter fountain features an upper basin that cradles the sculpture platform, from which water flows gracefully down to intermediate and lower basins. Integrated LED lighting in each basin brings the fountain to life at night, offering a captivating visual experience during campus events.

Fountain People provided the specialized water feature equipment, including RGBW LED light fixtures, UL-listed control panels, water-level sensors, diverter sumps, and a fully engineered equipment vault. A total of 32 FX-PRO Series LED fixtures were installed to deliver programmable, color-changing displays. The system combines advanced functionality with artistic elegance, transforming the fountain into a showpiece that celebrates school pride and craftsmanship.



Qubein Arena Panther Fountain
High Point University | High Point, NC

Product Focus: Underwater Fountain Lighting



LEARN MORE

FX-PRO Series RGBW LED Fountain Light

FX-PRO Series RGBW LED color-changing light fixtures are designed to illuminate fountain spray effects in fully submerged environments. Available with 12, 32, 40, and 72 watts of LED color-changing light, this fixture has on-board DMX for more control and includes an angle adjustable yoke to position the fixture as desired. Unit may be anchored to a finished floor or wall.



LEARN MORE

FX-PRO Series Flush Mount LED Fountain Light

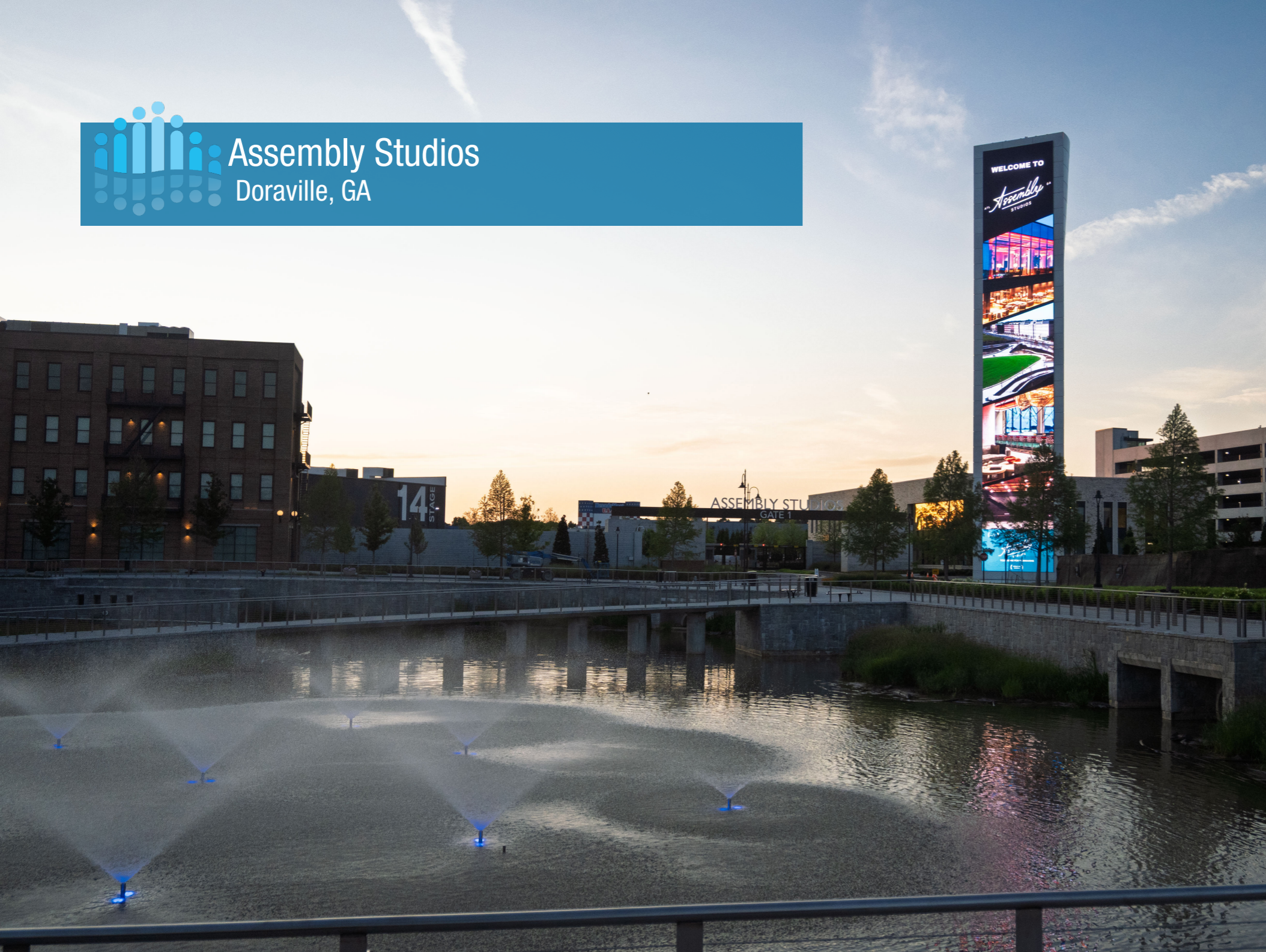
Fountain People FX-PRO Series LED light fixture is designed, engineered and fabricated for illumination of fountain and splash pad spray effects. The fixture is located in a niche housing poured flush with the fountain floor or wall.





Assembly Studios

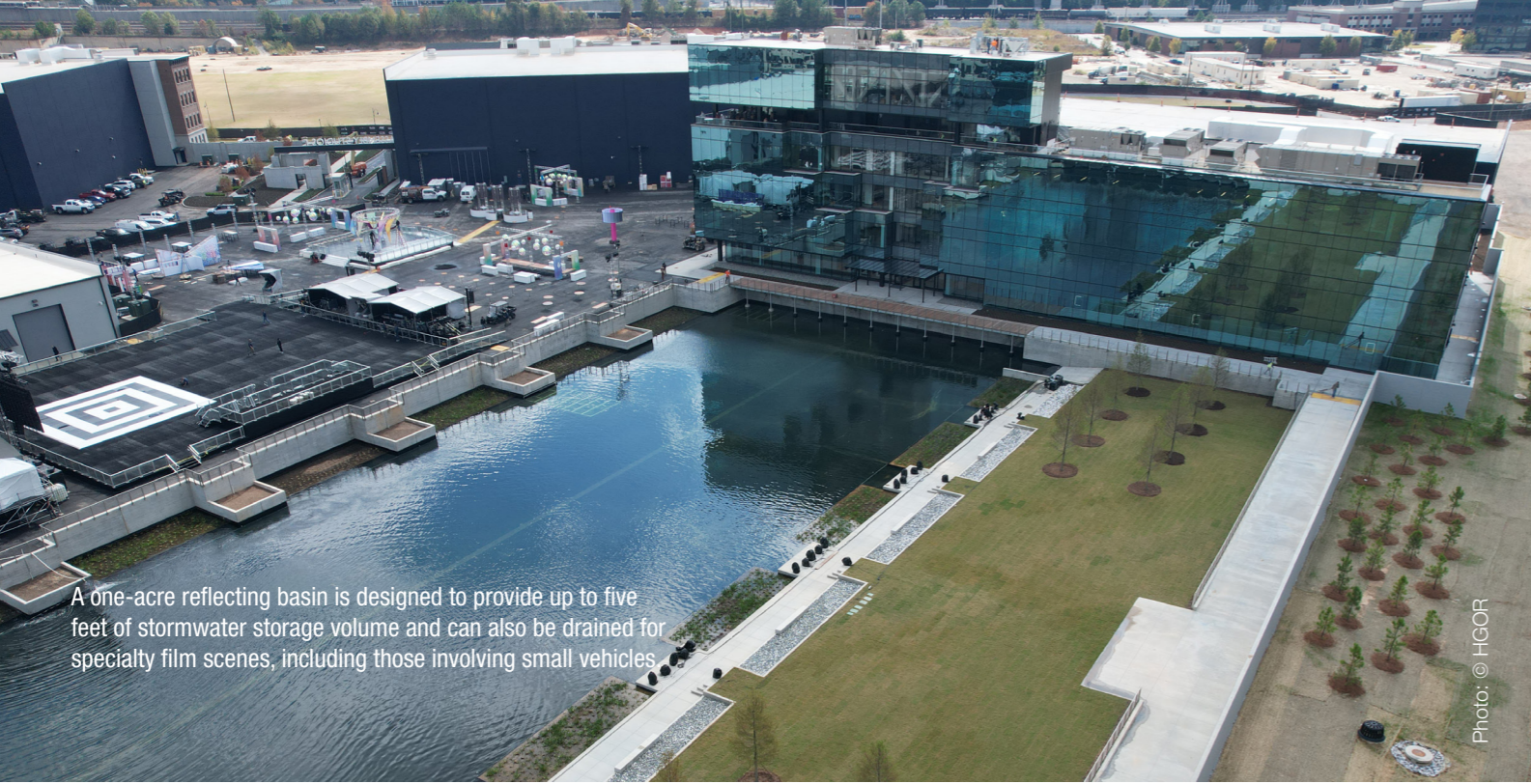
Doraville, GA



Assembly Studios in Doraville, Georgia is a cutting-edge film campus that blends entertainment with vibrant public spaces. The 135-acre site includes 19 sound stages, mill spaces, and production offices, while also welcoming the community with walking paths and greenspaces.

At the front of the campus lies a four-acre public park, designed by HGOR, that features a large, multi-functional water feature designed to serve both aesthetic and environmental purposes. With sustainability in mind, the fountain doubles as a stormwater retention basin for over 50 acres of runoff. Fountain People provided the water feature equipment and controls for the park's fountain, including nine transformer jets that alternate between tall vertical sprays and wide fan displays. These jets are animated with programmable sequences and color-changing LED lighting, transforming the fountain into a visual spectacle by day and night. The water feature not only supports the site's sustainability goals, but also enhances the park's usability as a film set and public gathering space.

On the opposite end of the Assembly Studios campus lies a one-acre reflecting basin, also engineered with stormwater detention in mind. Designed to provide up to five feet of storage volume, the pond can also be drained for specialty film scenes, including those involving small vehicles and other unique settings. It also supports the site's fire safety infrastructure. Fountain People supplied essential water feature equipment for this installation, including pump skids and control panels, ensuring smooth performance whether the basin serves infrastructure needs or cinematic storytelling.



A one-acre reflecting basin is designed to provide up to five feet of stormwater storage volume and can also be drained for specialty film scenes, including those involving small vehicles.

Photo: © HGOR





Fountain of Light Restoration

Hurt Park | Atlanta, GA



Hurt Park, a small triangular green space in downtown Atlanta adjacent to Georgia State University, has been a civic landmark since the 1940s. At its center stands the iconic 'Fountain of Light', designed by sculptor Julian Harris and gifted to the city by the Emily and Ernest Woodruff Foundation in 1940. Originally part of a vibrant urban gathering place designed by landscape architect William C. Pauley, the park and fountain were once among downtown Atlanta's most popular attractions before decades of wear led to significant decline.

By the time renovation efforts began, the fountain had fallen into severe disrepair, with nonfunctioning mechanics and a neglected landscape that diminished its historic appeal. Fountain People was brought in by HGOR Landscape Architects to help restore the fountain and reimagine the surrounding space. Working in collaboration with the City of Atlanta and Georgia State University, the team focused on preserving the fountain's original character while upgrading its infrastructure with modern mechanical, electrical, and hydraulic systems.

Fountain People played a key role in reviving the fountain's signature visual impact, designing custom stainless steel spray rings and a central jet that recreates the classic vertical display while introducing enhanced performance. The renovation also incorporated programmable LED lighting for dynamic color effects, blending historic inspiration with contemporary technology. Completed in August 2022, the restored fountain now stands as a re-energized centerpiece of Hurt Park honoring its legacy while serving a new generation of visitors.



Multiple stainless steel spray rings were created for the Fountain of Light restoration. These included a 5ft spray ring, a 7ft spray ring, and a center jet that shoots water 18ft into the air for a classic effect. An additional 58 free standing, colored LED light fixtures were also included to illuminate the water in a variety of colors.



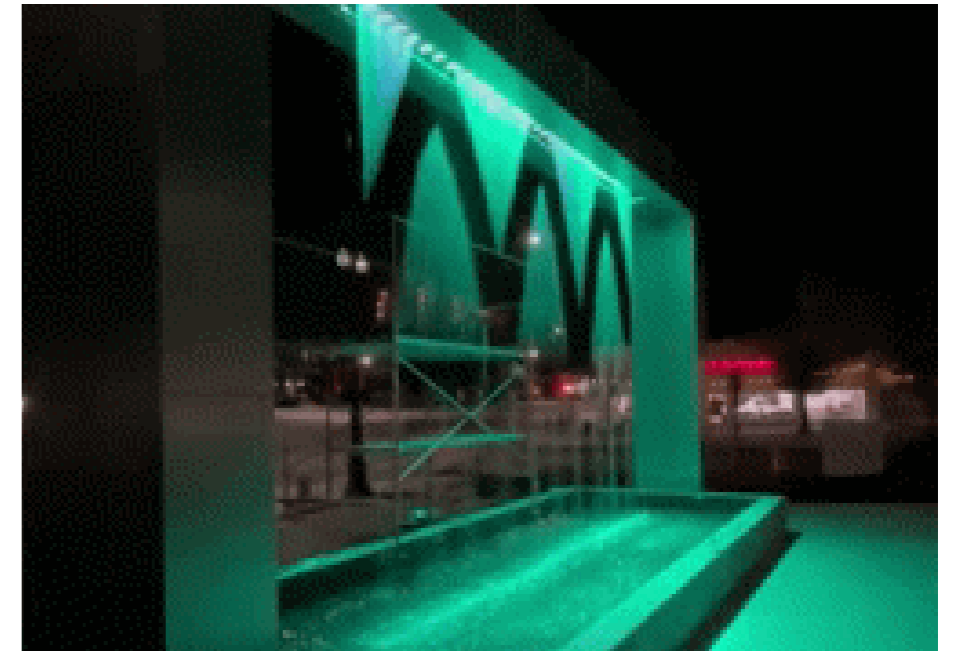
Provo Flash Wall

City Hall | Provo, UT



This unique water feature at the Provo City Hall utilizes projection capabilities to display the Provo City logo and other various shapes behind the water. Projections are also visible at night with the use of a backlight. A collaboration with OASE and CEM Aquatics, Fountain People provided the design and water feature equipment for this dynamic fountain.

“This type of addition adds to the vibrancy of not only city hall but the entire city.” - Scott Henderson, Project Manager



SEE THIS WATER
FEATURE IN MOTION



HPU Entryway Fountain

High Point University | High Point, GA



The entryway fountain at High Point University's Welcome Center serves as a vibrant showcase of school pride. This linear fountain creates a striking first impression for students, visitors, and alumni. The design features a single-level oval basin with nine Geyser Jets arranged in a central line, producing highly aerated conical sprays that reach up to six feet high. Dynamic water effects are illuminated by programmable LED lighting in white and purple, bringing the university's colors to life in the evening.

Each Geyser Jet is paired with a freestanding FXPRO Series RGBW LED fixture, enabling coordinated lighting displays across the length of the basin. An integrated wind anemometer ensures reliable operation by adjusting spray heights based on weather conditions, optimizing both visibility and water conservation.

Fountain People provided the complete fountain system, including a C-series underground equipment vault located adjacent to the display. The vault houses a 7.5-HP display pump, a 1-HP filter pump with TA60 sand filter, suction strainer, and fill manifold, along with a UL-listed electrical panel featuring motor starters, breakers, LED controls, and a digital time clock. Additional components include a sump pump, a vent fan, an access ladder, and a NEMA-rated main disconnect.





fountain people™
A PLAYCORE company

Contact Us:
4600 Highway 123
San Marcos, Texas 78666
512.392.1155
sales@fountainpeople.com
www.fountainpeople.com



Download Our
Product Catalog