

JCN Series

Jet Cluster Nozzle:

The JNC Jet Cluster creates a medium column of water.

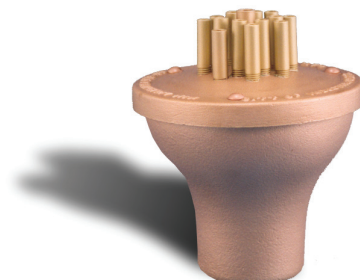
Specification:

JCN Jet Cluster Nozzle, machined cast bronze and brass construction, uses multiple solid stream nozzles grouped to create a fuller effect.

- Water Level Dependent - No
- Wind Resistance - Good
- Sound Level - Moderate
- Clogging Potential - Moderate
- Splash Radius - 1.0

Material: Machined cast bronze and brass

Finish: Natural brass and bronze



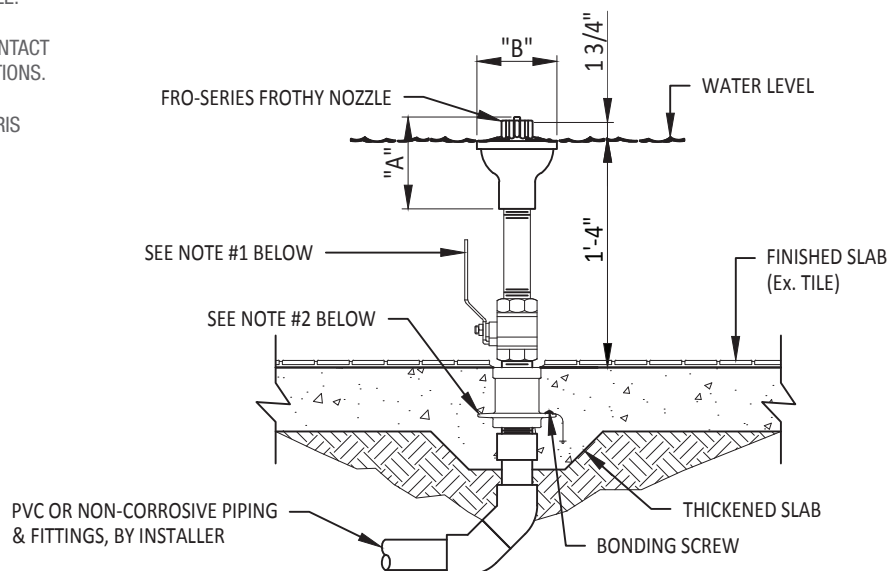
Details

Model Number	NPT	Dimensions		Feet	Spray Height				
		A	B		2	4	6	8	10
JCN-150	1½"	5¾"	5"	GPM	25	35	40	45	49
				Head Ft.	3	5	8	12	14

Highlighted sections indicate optimum performance

TECHNICAL NOTES:

1. BALL VALVE AS REQUIRED PER DESIGN FOR DISCHARGE FLOW CONTROL.
2. WATERSTOP FITTING REQUIRED FOR CONCRETE POUR. SIZE BASED ON PIPING AND NOZZLE SIZE. (SEE CATALOG ITEM: FWS-SERIES)
3. TYPICAL WATER DEPTH SHOWN MAY VARY. CONTACT FOUNTAIN PEOPLE FOR SHALLOWER APPLICATIONS.
4. THIS NOZZLE IS WATER LEVEL INDEPENDENT.
5. NOZZLE REQUIRES FINE SCREENING FOR DEBRIS REMOVAL. #40 MINIMUM MESH OR SMALLER.



ELEVATION VIEW

2021-01



fountain people
A PLAYCORE Company

Creating compelling guest experiences with water.

Fountain People, Inc.

4600 HWY 123, San Marcos, TX 78666 | (512) 392-1155
info@fountainpeople.com | www.fountainpeople.com