

FOM Series

Foam Jet Nozzle:

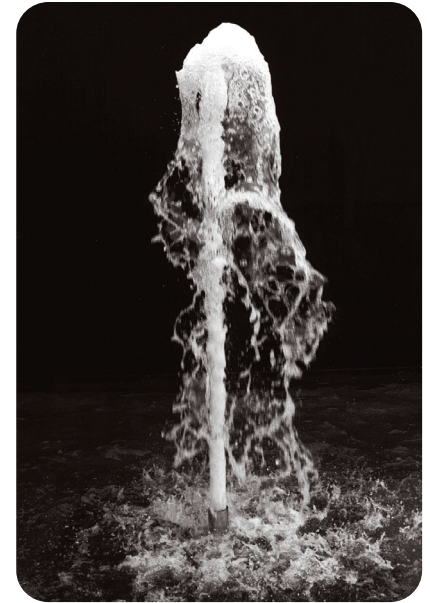
FOM Series Foam Nozzle provides a highly aerated foamy column of water.

Specification:

FOM Series Foam Nozzle, water level independent effect, machined brass and cast bronze construction with stainless steel fasteners, and includes integral alignment swivel with 15° of adjustability from center, 30° total. FNPT connection.

- Water Level Dependent - No
- Wind Resistance - Good
- Sound Level - Moderate
- Clogging Potential - Moderate
- Splash Radius - 1.0

Material: Machined brass and cast bronze
Finish: Natural brass and bronze



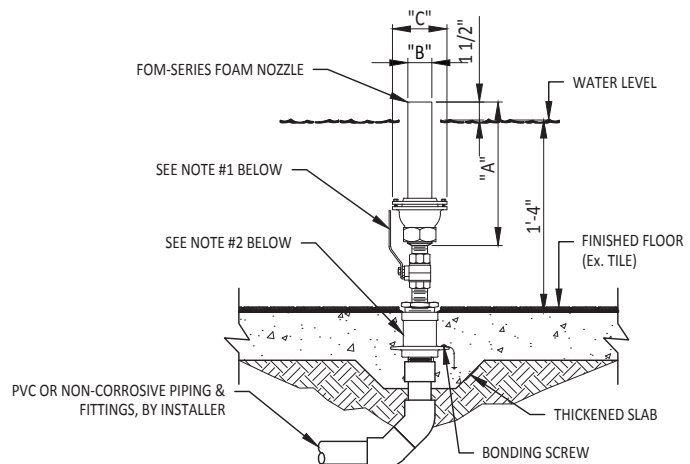
Details

Model Number	NPT	Dimensions			Feet	Spray Height											
		A	B	C		1	2	3	4	5	6	8	10	12			
FOM-050	½"	8	1	3"	GPM	7	9	11	12								
					Head Ft.	3	5	7	10								
FOM-075	¾"	10	1¾	3½"	GPM	13	20	26	29	31	36						
					Head Ft.	3	6	10	13	15	19						
FOM-100	1"	10¾	2¼	4½"	GPM	21	31	36	44	50	53	56					
					Head Ft.	3	6	9	12	14	18	21					
FOM-150	1½"	13¾	3¼	6¼"	GPM	39	59	66	77	88	96	112	127	138			
					Head Ft.	3	6	8	11	13	16	20	27	33			

Highlighted sections indicate optimum performance

TECHNICAL NOTES:

1. BALL VALVE AS REQUIRED PER DESIGN FOR DISCHARGE FLOW CONTROL.
2. WATERSTOP FITTING REQUIRED FOR CONCRETE POUR. SIZE BASED ON PIPING AND NOZZLE SIZE. (SEE CATALOG ITEM: FWS-SERIES)
3. TYPICAL WATER DEPTH SHOWN MAY VARY. CONTACT FOUNTAIN PEOPLE FOR SHALLOWER APPLICATIONS.
4. THIS NOZZLE IS WATER LEVEL INDEPENDENT.
5. NOZZLE REQUIRES FINE SCREENING FOR DEBRIS REMOVAL. #40 MINIMUM MESH OR SMALLER.



2021-01



fountain people
A PLAYCORE Company

Creating compelling guest experiences with water.

Fountain People, Inc.

4600 HWY 123, San Marcos, TX 78666 | (512) 392-1155
info@fountainpeople.com | www.fountainpeople.com