

# FIC Series

## Fountain in a Can™ - Mushroom Jet

### Water Effect:

The Mushroom Jet forms a clear, inverted cone-shaped sheet of water.

### Construction:

Single piece, type 304 deep-drawn stainless steel housing with a 1" FPT inlet, grounding connection, cast bronze top cover, EPDM 70 durometer o-ring, 18/8 stainless steel fasteners, and 11" diameter cast bronze top plate. Unit is supplied with a high density polyethylene (HDPE) construction cover, three 3/8" x 12" x 2" stainless steel anchor bolts with leveling nuts and washers, and a wood template.

### Nozzle:

Precision machined brass.

### Finish:

Standard finish is Natural Bronze.

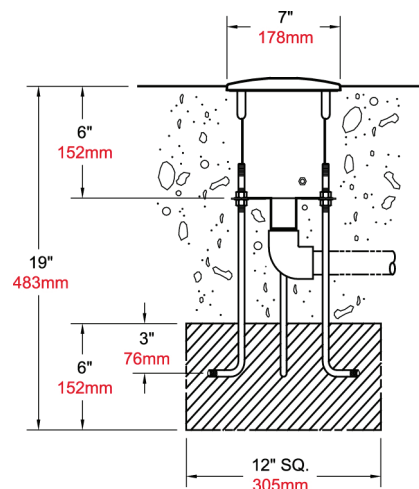
Optional finishes - Dark Bronze (DB), or Verde Green (VG).

Contact factory for custom finishes.



## Details

Model Number	Top Diameter	Inlet FPT	Feet	Spray Height				
				1	1.5	2	2.5	3
FIC-M1100	11"	1½"	GPM	25	28	30	33	35
			Head Ft.	6	6.5	7	7.5	8
			Spread Ft.	3	4.5	6	7.5	9



#### NOZZLE REQUIREMENTS:

1. Nozzle requires fine screening for debris removal. #8 (3/32") minimum mesh or smaller.
2. Housing must be encapsulated in concrete.
3. One 1" FTP connection point. Fittings by installer.

2021-01



**fountain people™**  
A PLAYCORE Company

*Creating compelling guest experiences with water.*

#### Fountain People, Inc.

4600 HWY 123, San Marcos, TX 78666 | (512) 392-1155  
info@fountainpeople.com | www.fountainpeople.com