

# Swivels

## Swivel:

Swivels are only recommended for minor nozzle alignment as the maximum adjustment of a swivel can create turbulence which will distort the effect.

**Material:** Machined cast bronze or brass

**Finish:** Natural bronze or brass



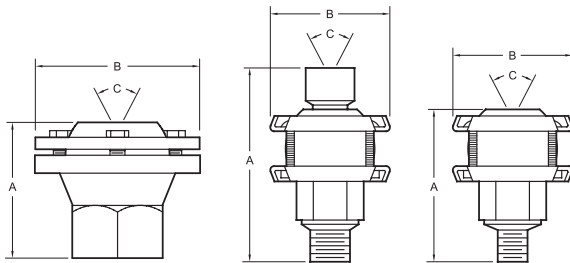
**EXB-100 -  
EXB-300**



**EXB-075**



**EXB-012 -  
EXB-050**



Model Number	NPT <sup>1</sup>	A Inches	B Inches	C Degrees	A mm	B mm	C Degrees
EXB-012	1/8"	1 1/4	1 1/2	40	32	38	40
EXB-025	1/4"	1 1/2	2	40	38	51	40
EXB-037	3/8"	1 1/2	2	40	38	51	40
EXB-050	1/2"	2 1/2	3	40	64	76	40
EXB-075	3/4"	3 1/2	3	40	89	76	40
EXB-100	1"	2 1/4	2 3/4	30	57	70	30
EXB-125	1 1/4"	2 1/2	3 1/4	30	64	83	30
EXB-150	1 1/2"	2 3/4	3 5/8	30	70	92	30
EXB-200	2"	3 5/8	4 1/2	30	92	114	30
EXB-300	3"	5 1/2	6 1/8	30	140	156	30

1. To specify British Standard Pipe Threads, add suffix **-BSP** to Catalog Number (EXB-012 - EXB-075 not available with BSP.)

Speaking the language of water.™

