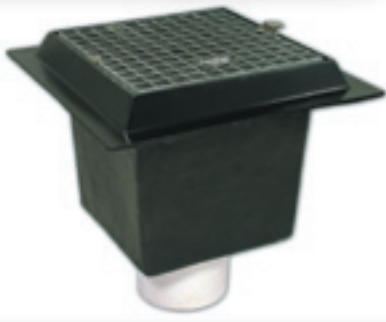
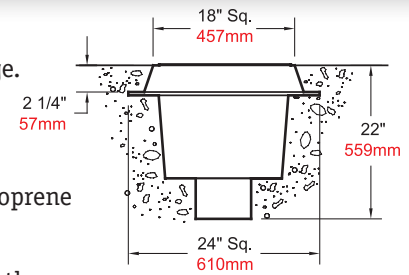


R-84()G



Suction Sump with Grate

- Heavy-duty FRP sump with integral waterstop flange.
- Heavy-duty FRP grate with safety clip and latch.
- Standard inlet is PVC pipe.
- Add suffix **-FL** for flanged connection including neoprene flange gasket and stainless steel fasteners.
- Maximum flow rates are based on 16"/41cm water depth.



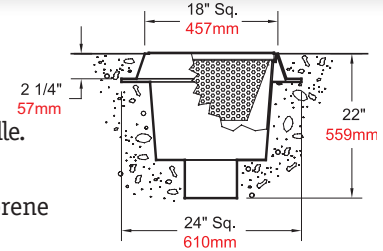
Model Number	Inlet (PVC Pipe)	Suction GPM	Suction LPM
R-84-6G	6"	180	681
R-84-8G	8"	320	1,211

R-84()GD



Basin Suction Strainer

- Heavy-duty FRP sump with integral waterstop.
- Heavy-duty FRP grate with safety clip and latch.
- Stainless steel removable strainer basket with integral handle.
- Standard inlet is PVC pipe.
- Add suffix **-FL** for flanged connection including neoprene flange gasket and stainless steel fasteners.
- Maximum flow rates are based on 16"/41cm water depth.



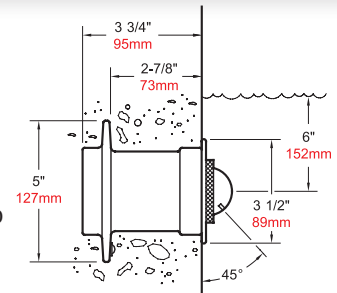
Model Number	Inlet (PVC Pipe)	Suction GPM	Suction LPM
R-84-6GD	6"	180	681
R-84-8GD	8"	320	1,211

FEC-200A



Sweep Eyeball Inlet Fitting

- Designed to sweep pool floor of debris.
- Cast bronze with natural finish.
- Integral waterstop with ground screw.
- Available with British Standard Pipe Threads, add **-BSP** to catalog number.



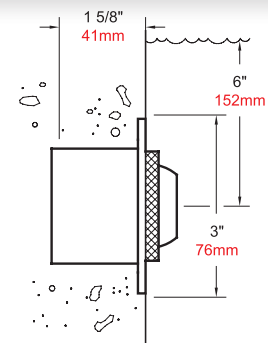
Model Number	NPT	Minimum Flow Rate		Maximum Flow Rate	
		GPM	LPM	GPM	LPM
FEC-200A	2"	5	19	15	57

R-85B



Adjustable Eyeball Inlet Fitting

- Designed to direct debris to skimmers and to improve water circulation.
- Cast bronze with natural finish.
- Ground screw.



Model Number	NPT	Minimum Flow Rate		Maximum Flow Rate	
		GPM	LPM	GPM	LPM
R-85B	1 1/2"	10	38	30	114